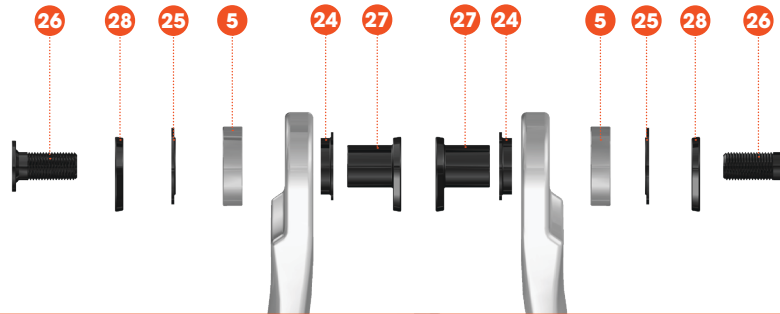
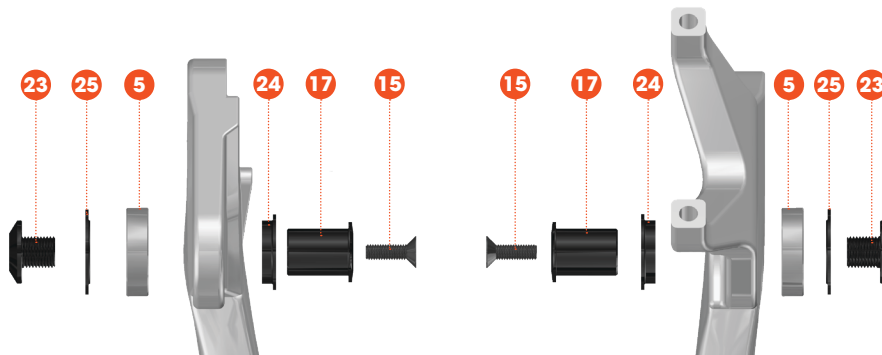


DESCRIPTION	PART NUMBER	QTY	ASSEMBLY
1 Hanger, Rear, UDH	CMPHUDH01	1	
4 Washer, 5.2ID, 12.5OD, 1.5L	120-00267	1	
5 Bearing, 6902 LLU Max	CMPWFB6902LLUMAX	8	
6 Bearing, 6900 LLU Max	CMPWFB6900LLUMAX	2	
7 Cable routing, Clamp, 1 cable	CMPWCG13H	1	
9 Axle, 12-180-P1.0-13	CMPAXR12B	1	9-13.5Nm
12 Screw, M5x0.8, 15L, button head	NA	2	9Nm
13 Screw, M5x0.8, 16L, flathead	CMPBTG2PR03	2	
15 Screw, M5x0.8, 16L, flathead	CMPBTG2PR03S	2	
16 Screw, M5x0.8, 35L, flathead	CMPBTG2PR01	3	
17 Pivot hardware, Female, M10x1.0, 20L	CMPBTG2PR16B	2	
18 Pivot spacer, 15.5ID, 21OD, 38L	CMPBTG2PR19CX	1	
19 Pivot hardware, Female, M10x1.0, 70L	CMPBTG2PR18A	1	
20 Pivot Hardware, Male, M10x1.0, 20L	CMPBTG2PR18B	2	12Nm
21 Pivot hardware, Male, M10x1.0, 19L	CMPBTM03	2	12Nm
22 Pivot hardware, Female, M10x1.0, 83L	CMPBTG2PR19AX	1	

DESCRIPTION	PART NUMBER	QTY	ASSEMBLY
23 Pivot Hardware, Male, M10x1.0, 14.5L	CMPBTG2PR16AX	2	8Nm
24 Pivot Spacer, 15ID, 24OD, 4.5L	CMPBTG2PR10H	4	
25 Pivot Spacer, 15ID, 27OD, 1.5L	CMPBTG2PR09H	4	
26 Pivot hardware, Male, M10x1.0, 23L	CMPBTG2PR21CX	2	12Nm
27 Pivot hardware, Female, M10x1.0, 19L	CMPBTG2PR21AX	2	
28 Pivot spacer, 15ID, 21OD, 3L	CMPBTG2PR21BX	2	
29 Pivot hardware, Male, M5x0.8, 25.5L	CMPBTM255	1	6Nm
30 Pivot spacer, 15.5ID, 21OD, 48L	CMPBTG2PR18CX	1	
31 Frame Protection, Top Tube	CMPWFPVLDLC1171	1	
32 Frame Protection, Chainstay	CMPWFPVLF00336	1	
33 Frame Protection, Chainstay	CMPWFP10XAL	1	
34 Pivot hardware, Female, M5x0.8, 39.5L	CMPBTF395	1	6Nm
35 Seatclamp, 34.9	CMPSCJD119A349	1	5-6Nm
36 Cable routing, Clamp, 3 cable	CMPWCG04H	2	
37 Cable Routing, Grommet, 1 cable	CMPWCG12H	1	
39 Washer, 5.3ID, 9OD, 1.0L	NA	2	

**DETAIL 1**

**DETAIL 2**

**Bolt Kit**

CMPBK23

DESCRIPTION	PART NUMBER	QTY	ASSEMBLY
4 Washer, 5.2ID, 12.5OD, 1.5L	120-00267	1	
7 Cable routing, Clamp, 1 cable	CMPWCG13H	1	
12 Screw, M5x0.8, 15L, button head	NA	2	
13 Screw, M5x0.8, 16L, flathead	CMPBTG2PR03	2	
15 Screw, M5x0.8, 16L, flathead	CMPBTG2PR03S	2	
16 Screw, M5x0.8, 35L, flathead	CMPBTG2PR01	3	
17 Pivot hardware, Female, M10x1.0, 20L	CMPBTG2PR16B	2	
18 Pivot spacer, 15.5ID, 21OD, 38L	CMPBTG2PR19CX	1	
19 Pivot hardware, Female, M10x1.0, 70L	CMPBTG2PR18A	1	
20 Pivot Hardware, Male, M10x1.0, 20L	CMPBTG2PR18B	2	12Nm
21 Pivot hardware, Male, M10x1.0, 19L	CMPBTM03	2	12Nm
22 Pivot hardware, Female, M10x1.0, 83L	CMPBTG2PR19AX	1	
23 Pivot Hardware, Male, M10x1.0, 14.5L	CMPBTG2PR16AX	2	8Nm
24 Pivot Spacer, 15ID, 24OD, 4.5L	CMPBTG2PR10H	4	
25 Pivot Spacer, 15ID, 27OD, 1.5L	CMPBTG2PR09H	4	
26 Pivot hardware, Male, M10x1.0, 23L	CMPBTG2PR21CX	2	12Nm
27 Pivot hardware, Female, M10x1.0, 19L	CMPBTG2PR21AX	2	
28 Pivot spacer, 15ID, 21OD, 3L	CMPBTG2PR21BX	2	
29 Pivot hardware, Male, M5x0.8, 25.5L	CMPBTM255	1	6Nm
30 Pivot spacer, 15.5ID, 21OD, 48L	CMPBTG2PR18CX	1	
34 Pivot hardware, Female, M5x0.8, 39.5L	CMPBTF395	1	6Nm
36 Cable routing, Clamp, 3 cable	CMPWCG04H	2	
39 Washer, 5.3ID, 9OD, 1.0L	NA	2	

**Frame Protection Kit**

CMPWFP29

DESCRIPTION	PART NUMBER	QTY	ASSEMBLY
31 Frame Protection, Top Tube	CMPWFPVLDC1171	1	
32 Frame Protection, Chainstay	CMPWFPVL00336	1	
33 Frame Protection, Chainstay	CMPWFP10XAL	1	
37 Cable Routing, Grommet, 1 cable	CMPWCG12H	1	

**Bearing Kit**

CMPBCBK27

DESCRIPTION	PART NUMBER	QTY	ASSEMBLY
6 Bearing, 6900 LLU Max	CMPWFB6900LLUMAX	2	
5 Bearing, 6902 LLU Max	CMPWFB6902LLUMAX	8	

**Frequently Asked Questions**

<b>BOTTOM BRACKET</b>	PF 92
<b>SHOCK</b>	EYE TO EYE 205 / STROKE 62.5mm
<b>REAR SHOCK - LOWER HARDWARE</b>	20 x 8mm
<b>HEADSET</b>	UPPER 44mm LOWER 56mm
<b>HANGER</b>	UDH/T-Type
<b>SEAT TUBE</b>	POST 31.6mm CLAMP 34.9mm
<b>STEERER</b>	TAPERED 1 1/2"
<b>MAX CHAINRING SIZE</b>	38T
<b>CHAINLINE</b>	52mm
<b>MAX SEATPOST INSERTION</b>	S-M 270mm / L 300mm / XL 320mm
<b>BRAKE MOUNT ROTOR DIAMETER</b>	180mm
<b>ISCG MOUNT</b>	ISCG 05
<b>FRONT AXLE</b>	15x110mm (AL) 20X110MM (DH)
<b>REAR AXLE</b>	12x148mm / 12x180x1.0mm